

Consumables & Miscellaneous



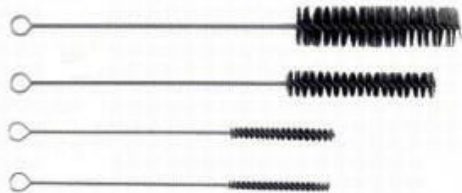
Light Hand Shield



HVE Suction Tubes



Suction Tube Adaptors



Aspirator Brushes



Micro Applicators



Dental X-rays & barrier Envelopes



Surgical Aspirators



Instrument Trays : Metal & Plastic



Prophy Cups & Prophy Brushes



Disposable Diagnostic Sets



Barrier Sleeves



Endo Measuring block



Syringe Tips & Mixing Tips



Autoclavable Cheek Retractor



Disposable Eye Shields



Face Shields



Cotton Rolls



Cotton Roll Dispenser



Endodontic Boxes



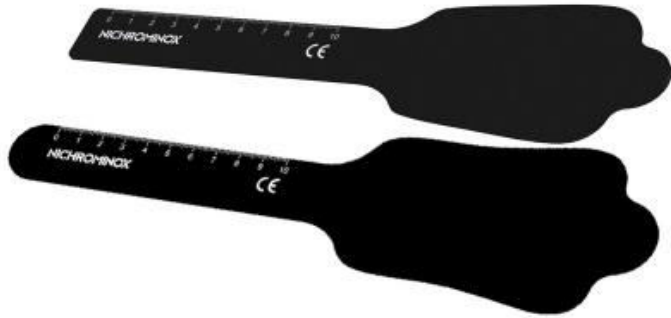
Sterilization Cassettes



Implantology Kits



Intraoral Photography Mirrors



Palatal Contrastors



Intraoral Sandblaster



Suture Materials



Antiseptics, Disinfectant & Sterilization



Model Trimmer & Vacuum Formers



Dental Wax



Grindcare : Solution For Bruxism



Single Tooth Anesthesia System



Dental Chair Unit



Ergonomic Salli chair



Ultrasonic Cleaner



Phantom Head & Frasco teeth

For product details please refer to our following brands

- ✓ **B. Braun**
- ✓ **Bode**
- ✓ **Buffalo**
- ✓ **Coltene- Roeko**
- ✓ **Danville**
- ✓ **DCI**
- ✓ **Directa**
- ✓ **Edenta**
- ✓ **Hahnenkratt**
- ✓ **Hager & Meisinger**
- ✓ **Hager & Warken**
- ✓ **Hanel**
- ✓ **Hanshin**
- ✓ **Johnson & Johnson**
- ✓ **Kemdent**
- ✓ **Magnate**
- ✓ **Mani**
- ✓ **Medotech**
- ✓ **Microcopy**
- ✓ **Milestone**
- ✓ **Nichrominox**
- ✓ **Nissin**
- ✓ **Op-D-Op**
- ✓ **Oral Kare**
- ✓ **Osada**
- ✓ **Parkell**
- ✓ **Polydentia**
- ✓ **Premium Plus**
- ✓ **Rolence**
- ✓ **Saeshin**
- ✓ **Salli**
- ✓ **SDI**
- ✓ **Soniclean**
- ✓ **Star X ray**
- ✓ **Sure- Endo**
- ✓ **Young Dental**
- ✓ **Zirc**
- ✓ **3B Scientific**